



TOWN OF TOPSHAM, MAINE

PROPERTY MAPS



James H. Thomas
gisSolutions of Maine
Cumberland, Maine
jh@maine.rr.com

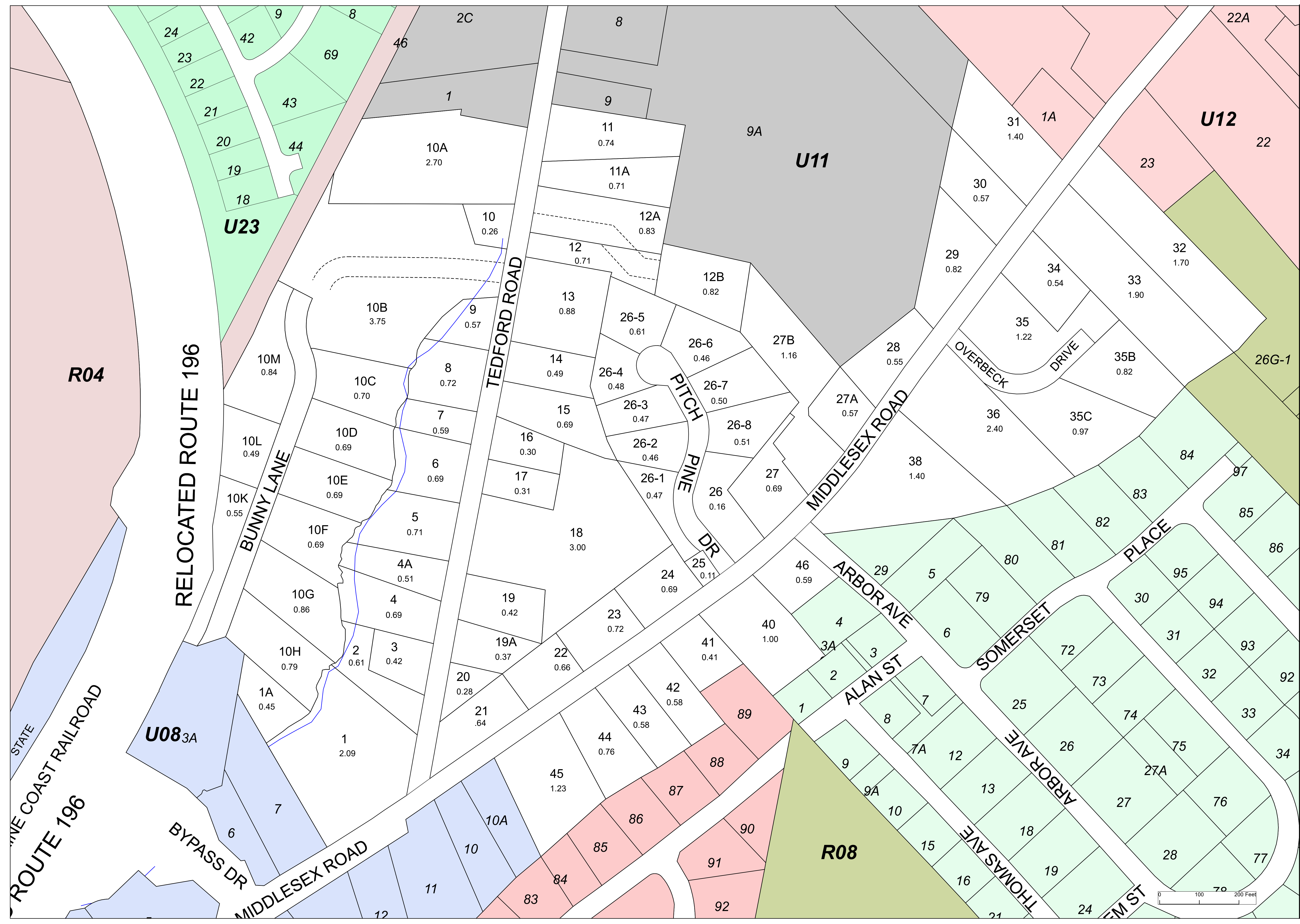
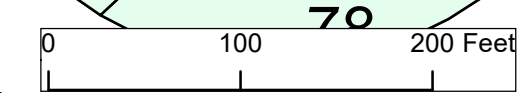
These maps are intended to be used for the purpose of Property Tax Assessments and should not be used for conveyances.
Revised to April 1st

Scale: = 100

	Easement		Water body
	Hooks		Subject Map
	ROW		Boundary Map
	Streams		Boundary Map
	Town Boundary		Boundary Map
	Stare		Boundary Map

2023

MAP: U10



STATE
COAST RAILROAD
ROUTE 196
RELOCATED ROUTE 196
BYPASS DR
MIDDLESEX ROAD

BUNNEY LANE

TEDFORD ROAD

PITCH PINE DR

MIDDLESEX ROAD

OVERBECK DRIVE

ARBOR AVE

ALAN ST

SOMERSET

ARBOR AVE

THOMAS AVE

U23

2C

U11

U12

U08_{3A}

R08

R04

10A 2.70

10B 3.75

10C 0.70

10D 0.69

10E 0.69

10F 0.69

10G 0.86

10H 0.79

10I 0.45

10J 0.84

10K 0.49

10L 0.55

1 0.26

2 0.61

3 0.42

4 0.69

5 0.71

6 0.69

7 0.59

8 0.72

9 0.57

10 0.26

11 0.74

12 0.71

13 0.88

14 0.49

15 0.69

16 0.30

17 0.31

18 3.00

19 0.42

20 0.28

21 0.64

22 0.66

23 0.72

24 0.69

25 0.11

26 0.16

27 0.69

28 0.55

29 0.82

30 0.57

31 1.40

32 1.70

33 1.90

34 0.54

35 1.22

36 2.40

37 0.97

38 1.40

39 0.57

40 1.00

41 0.41

42 0.58

43 0.58

44 0.76

45 1.23

46 0.59

47 0.51

48 0.46

49 0.47

50 0.50

51 0.51

52 0.16

53 0.69

54 0.57

55 0.59

56 0.41

57 0.58

58 0.58

59 0.76

60 1.23

61 0.61

62 0.46

63 0.47

64 0.48

65 0.50

66 0.51

67 0.16

68 0.69

69 1.16

70 0.55

71 0.82

72 0.82

73 0.82

74 0.82

75 0.82

76 0.82

77 0.82

78 0.82

79 0.82

80 0.82

81 0.82

82 0.82

83 0.82

84 0.82

85 0.82

86 0.82

87 0.82

88 0.82

89 0.82

90 0.82

91 0.82

92 0.82

93 0.82

94 0.82

95 0.82

96 0.82

97 0.82

98 0.82

99 0.82

100 0.82

101 0.82

102 0.82

103 0.82

104 0.82

105 0.82

106 0.82

107 0.82

108 0.82

109 0.82

110 0.82

111 0.82

112 0.82

113 0.82

114 0.82

115 0.82

116 0.82

117 0.82

118 0.82

119 0.82

120 0.82

121 0.82

122 0.82

123 0.82

124 0.82

125 0.82

126 0.82

127 0.82

128 0.82

129 0.82

130 0.82

131 0.82

132 0.82

133 0.82

134 0.82

135 0.82

136 0.82

137 0.82

138 0.82

139 0.82

140 0.82

141 0.82

142 0.82

143 0.82

144 0.82

145 0.82

146 0.82

147 0.82

148 0.82

149 0.82

150 0.82

151 0.82

152 0.82

153 0.82

154 0.82

155 0.82

156 0.82

157 0.82

158 0.82

159 0.82

160 0.82

161 0.82

162 0.82

163 0.82

164 0.82

165 0.82

166 0.82

167 0.82

168 0.82

169 0.82

170 0.82

171 0.82

172 0.82

173 0.82

174 0.82

175 0.82

176 0.82

177 0.82

178 0.82

179 0.82

180 0.82

181 0.82

182 0.82

183 0.82

184 0.82

185 0.82

186 0.82

187 0.82

188 0.82

189 0.82

190 0.82

191 0.82

192 0.82

193 0.82

194 0.82

195 0.82

196 0.82

197 0.82

198 0.82

199 0.82

200 0.82

201 0.82

202 0.82

203 0.82

204 0.82

205 0.82

206 0.82

207 0.82

208 0.82

209 0.82

210 0.82

211 0.82

212 0.82

213 0.82

214 0.82

215 0.82

216 0.82

217 0.82

218 0.82

219 0.82

220 0.82

221 0.82

222 0.82

223 0.82

224 0.82

225 0.82

226 0.82

227 0.82

228 0.82

229 0.82

230 0.82

231 0.82

232 0.82

233 0.82

234 0.82

235 0.82

236 0.82

237 0.82

238 0.82

239 0.82

240 0.82

241 0.82

242 0.82

243 0.82

244 0.82

245 0.82

246 0.82

247 0.82

248 0.82