

Topsham Climate Action Plan

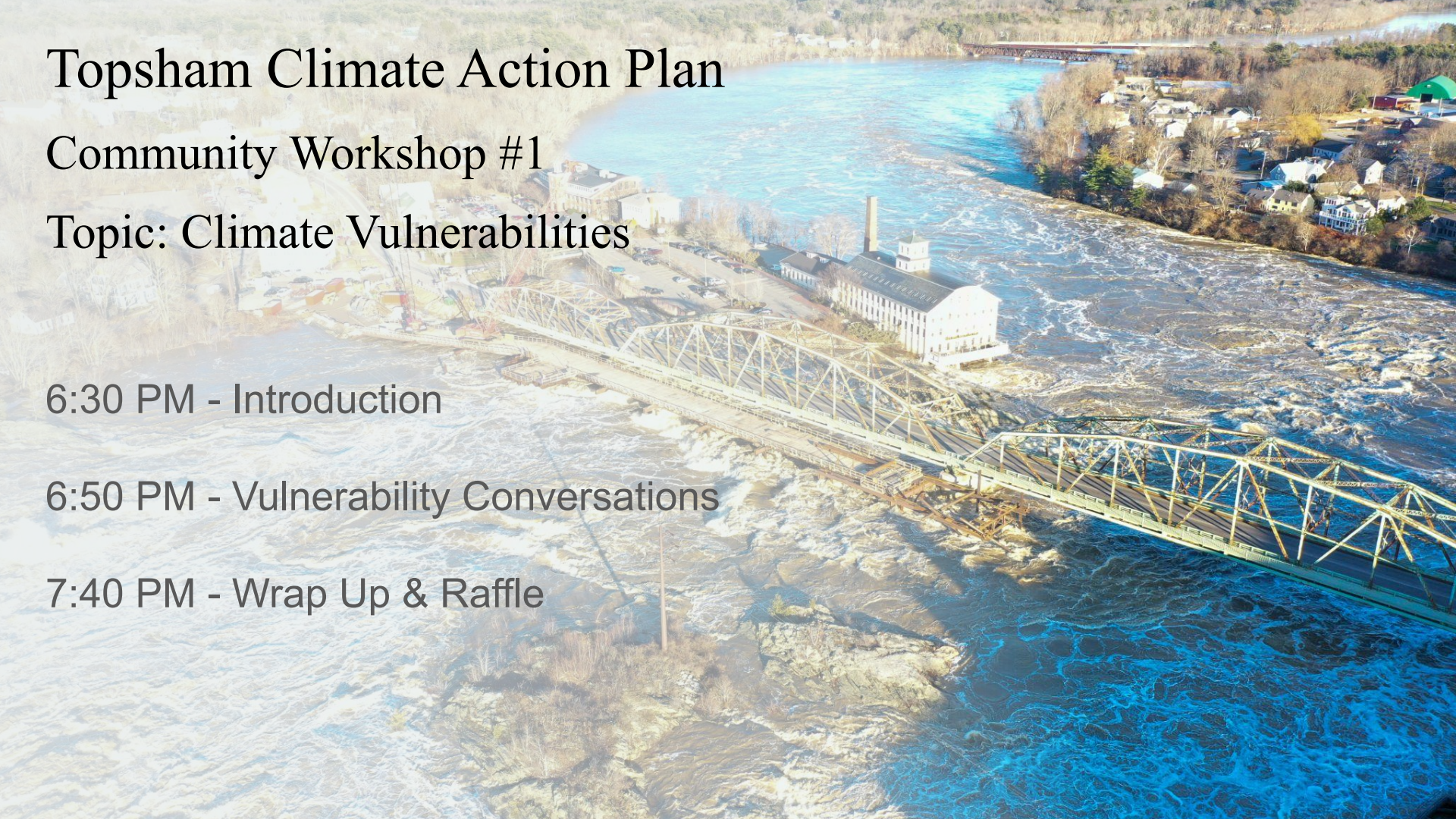
Community Workshop #1

Topic: Climate Vulnerabilities

6:30 PM - Introduction

6:50 PM - Vulnerability Conversations

7:40 PM - Wrap Up & Raffle



Introduction



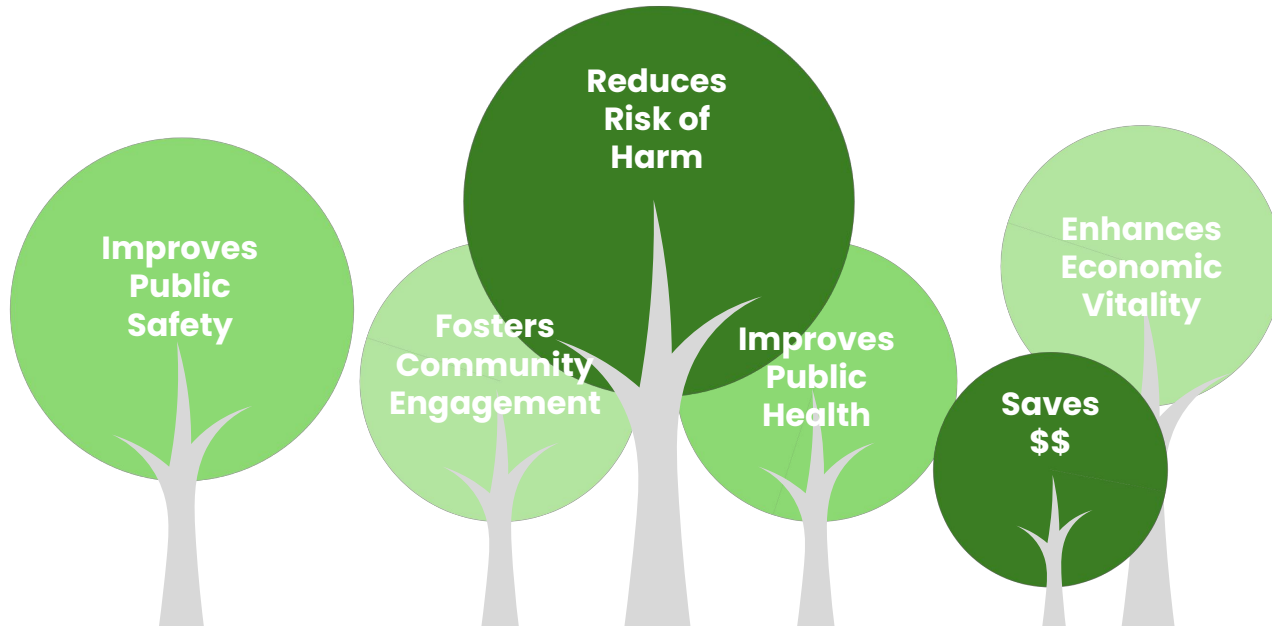
- What is a Climate Action Plan?
- How is severe weather currently impacting Topsham and what are we doing about it?
- What is a social vulnerability assessment?
- What is an infrastructure vulnerability assessment?

Climate Action Plan:

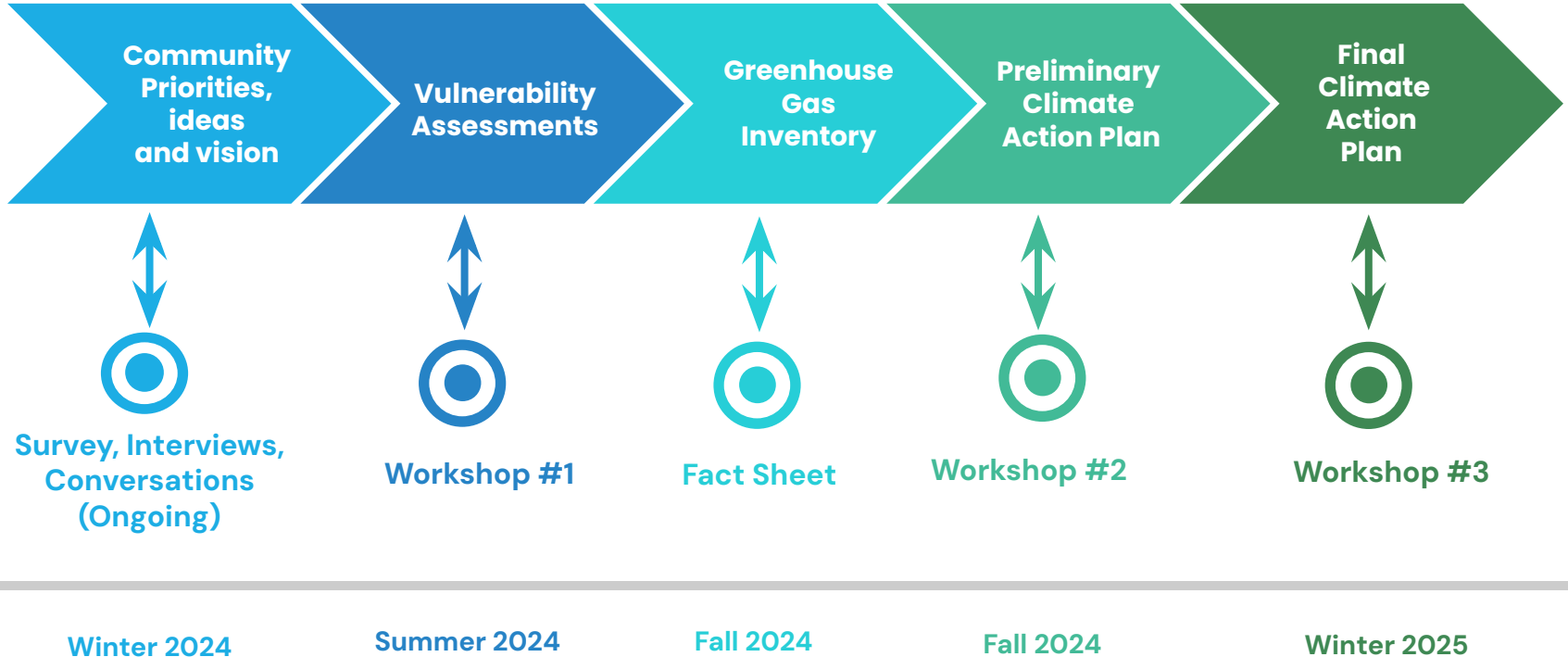
A clear, actionable plan to reduce the risks and adapt to a changing climate.

Climate Action Plan

A clear, actionable plan to reduce the risks and adapt to a changing climate.



Topsham Climate Action Planning



Tonight



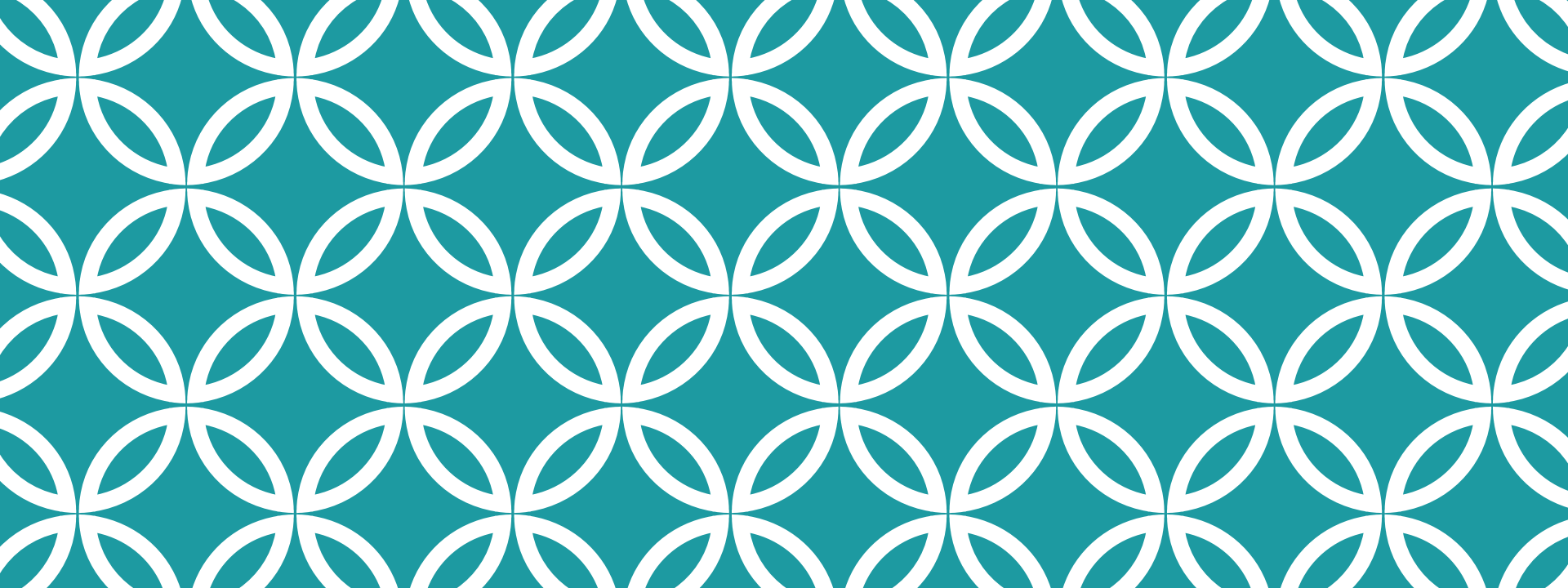
Workshop #1

We want to hear from YOU.

- Experiences
- Thoughts
- Concerns
- Hopes
- Ideas

Your input will be used to

- “Ground truth” information
- Enrich information with local knowledge
- Ensure your needs and priorities are addressed



Town Update

Skye Siladi
Director of Planning

- **Current Projects:**

- Pleasant Point Road erosion
- Tedford Road culvert replacement

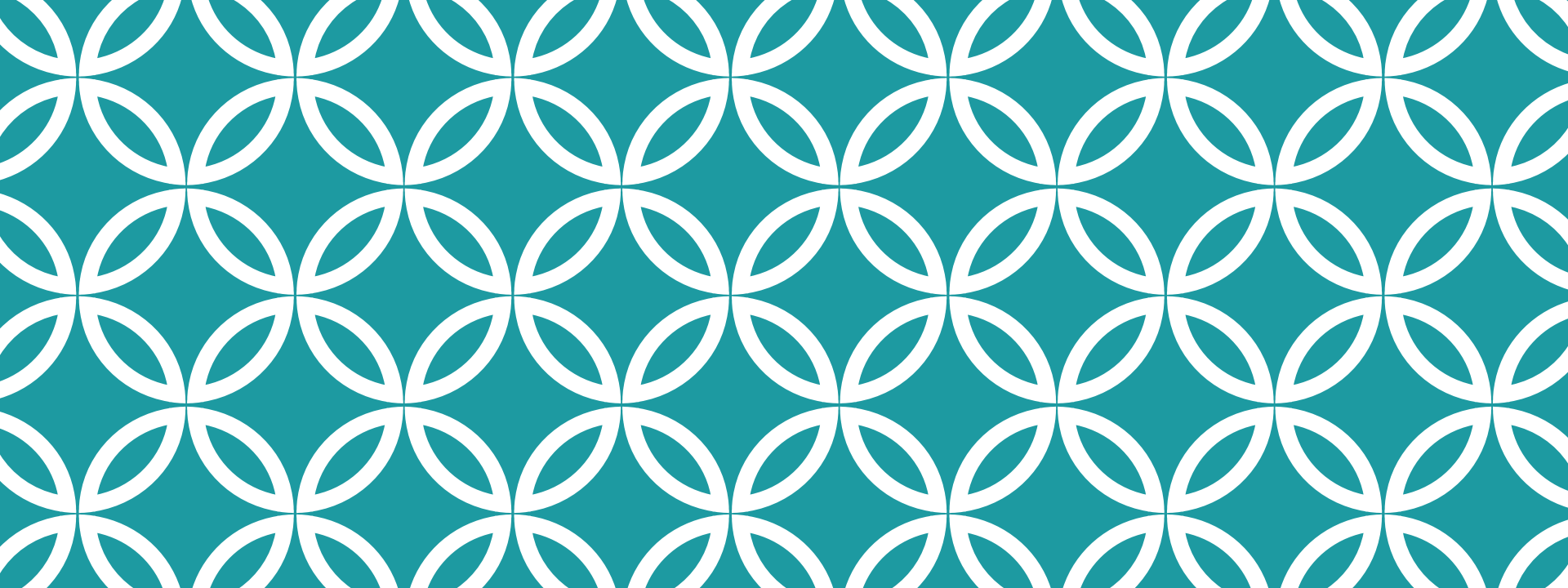
- **Completed Projects:**

- Elm Street culvert redesign
- Meadowcross Road culvert

- **Known Areas of Concern:**

- Bay Park rising groundwater
- Ivanhoe Drive rising groundwater





Infrastructure Vulnerability Assessment

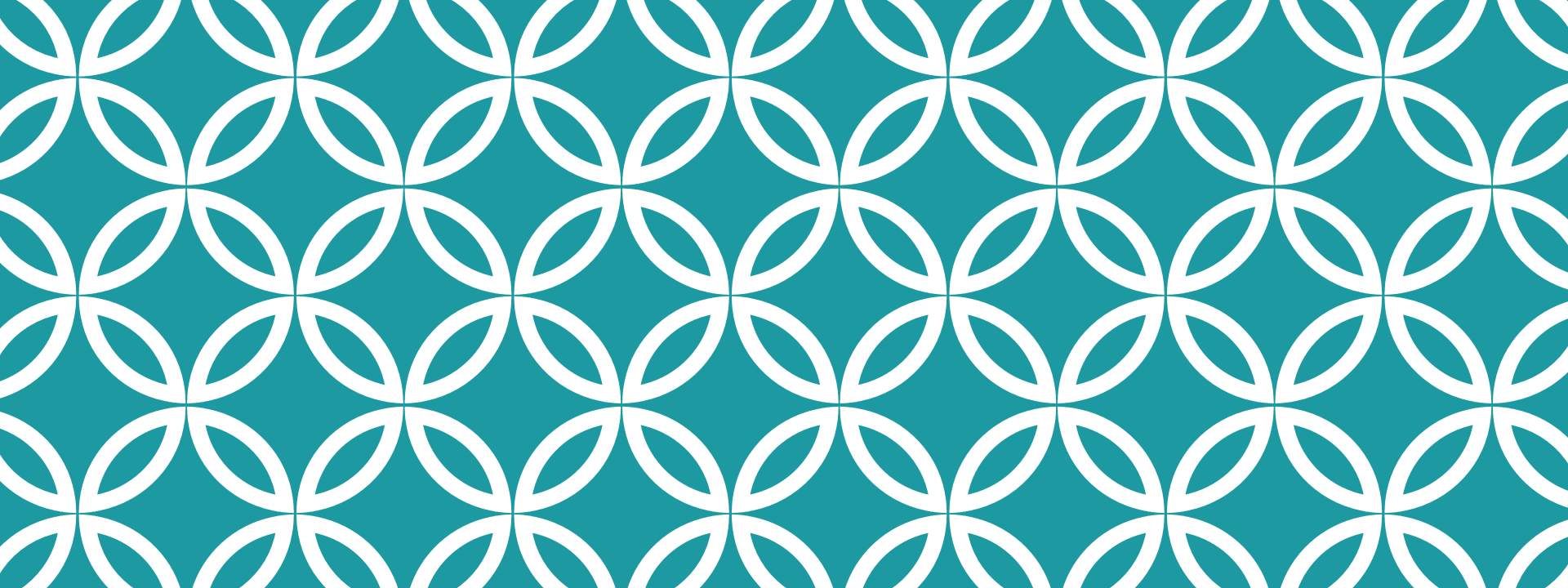
Julia Maine

Definitions For Today

Vulnerability: The degree to which built, social, and natural systems are impacted by climate hazards such as flooding, sea level rise, drought, etc.

Resilience: The ability to prepare for, respond to, and recover from disruptive events (i.e. storms) and changing conditions (i.e. sea level rise) while maintaining key functions and community characteristics.

Adaptation: Taking actions to prepare for climate impacts and adjust current conditions and behaviors to improve resilience.



Social Vulnerability Assessment

Jessica Brunacini

Definitions For Today

Social Vulnerability: relates to **certain conditions or circumstances that affect an individual or community's capacity** to anticipate, confront, repair, and recover from the effects of a stressor or shock, including climate change impacts or disasters.

Topsham Climate Action Plan

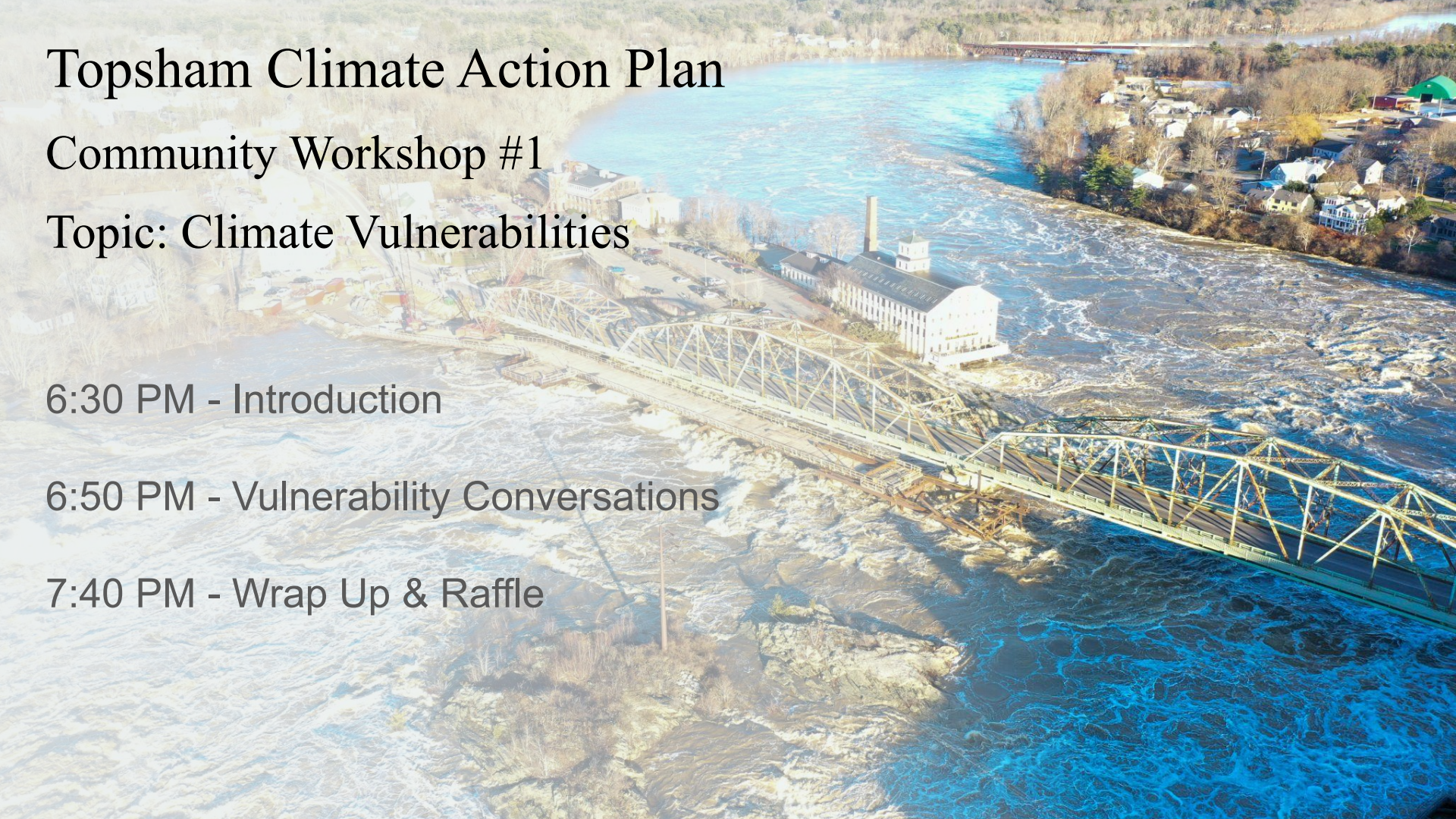
Community Workshop #1

Topic: Climate Vulnerabilities

6:30 PM - Introduction

6:50 PM - Vulnerability Conversations

7:40 PM - Wrap Up & Raffle



Mentimeter

Pull up Mentimeter presentation.

<https://www.mentimeter.com/app/presentation/alxt9bpmcfa7ka5bmyok4iprwh83j83b/first/edit>

Next Steps & Upcoming Events

Complete vulnerability assessments: Fall 2024

Complete greenhouse gas inventory: Fall 2024

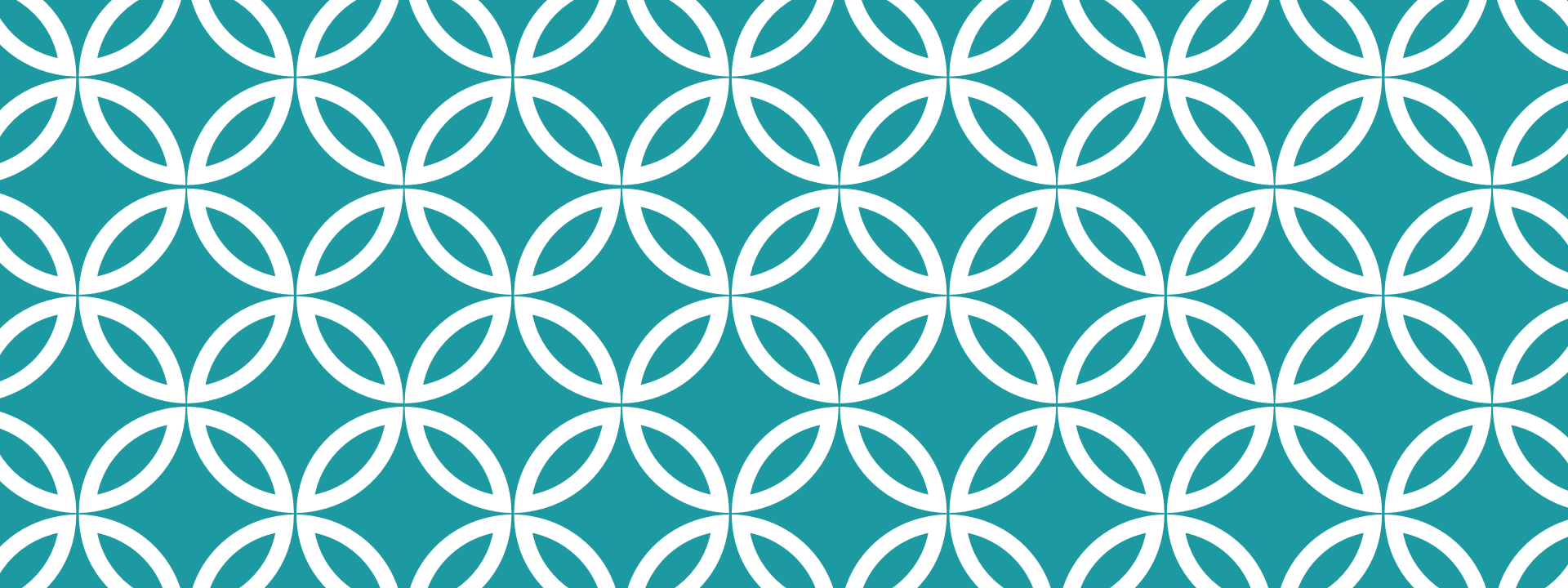
Develop a list of near and long-term actions to make Topsham stronger

Workshop #2: October 2024

Workshop #3: Winter 2025

Finalize Climate Action Plan: Winter 2025

Energy Committee meetings 4th Tuesday of the month



Thank you for participating! |